

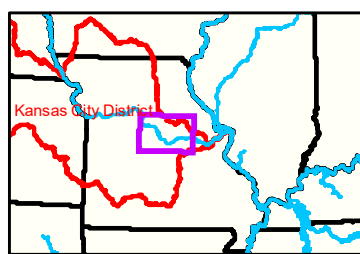
Notes

Boonville Gage = 16.76
at time of
collection 24 May 2021

WS RM 184.9
05242021
572.3

Boonville Gage = 16.76 at time of collection 24 May 2021"

Gage_L

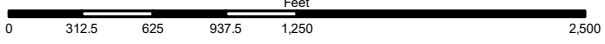


LEGEND

	< 8		< 8 ft		Green Passing
	8 - 9		8 - 9 ft		Red Passing
	9 - 9.5		9 - 10 ft		Green Crossing
	9.5 - 10		10 - 12 ft		Red Crossing
	10 - 12		River Mile		
	12 - 14		Sailing Line		
	14 - 16		BSNP Structure		
	> 16		Levee		

Buoy

	Green		AIS Green CAN
	Red		AIS Red NUN
	Green		Green CAN
	Red		Red NUN



NOTES:
Horizontal Coordinate System:
World Geodetic System of 1984 (WGS84), projected to the
Universal Transverse Mercator (UTM) Zone 15 North.
Distance units in U.S. Survey Feet

Vertical Datum:
Soundings are shown in feet and indicated depths
are referenced to water surface at time of collection.

The information depicted on this map represents the results of a survey
conducted on the date indicated and can only be considered
to represent the general condition existing at that time.

The location of navigation aids are based on and provided by
the U.S. Coast Guard.



Disclaimer: The U.S. Army Corps of Engineers (USACE) provides this information as a service to the public. It is not intended to be used for navigation or other purposes. The USACE does not warrant the accuracy, completeness, or timeliness of the information. The USACE is not responsible for any errors or omissions, or for any consequences arising from the use of the information. The user assumes all liability for any use of the information. The USACE is not responsible for any damages, including consequential damages, arising from the use of the information. The USACE is not responsible for any claims, damages, or liabilities, including consequential damages, arising from the use of the information. The USACE is not responsible for any claims, damages, or liabilities, including consequential damages, arising from the use of the information.

**KANSAS CITY DISTRICT
MISSOURI RIVER AREA OFFICE**

Submitted By:	MRAO
Reviewed By:	MRAO
Checked By:	MRAO
Approved:	

Survey Information

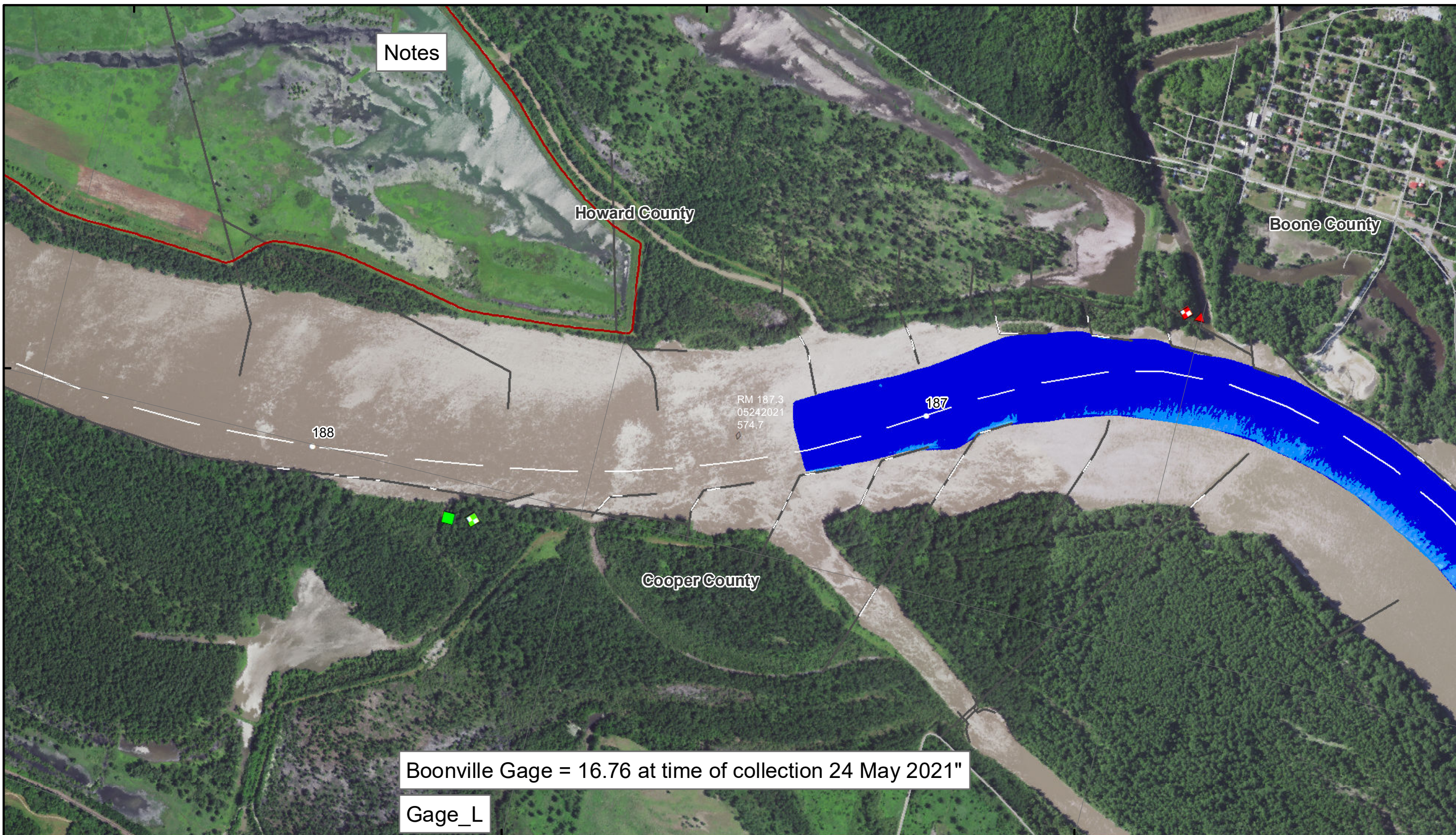
MO_02_LMR
MO_02_LMR_20210526_CS_185_0_187_2_SORT
26 May 2021

**Sheet
Number
39 of 46**

92°36'W

92°35'W

92°34'W



Notes

Howard County

Boone County

Cooper County

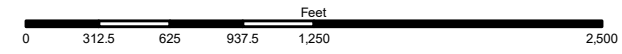
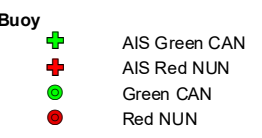
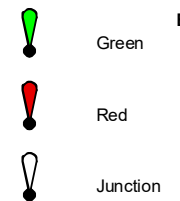
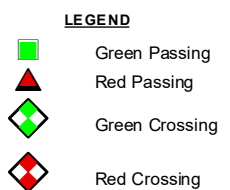
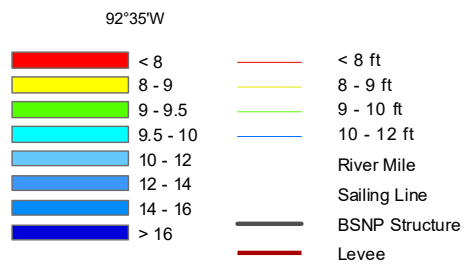
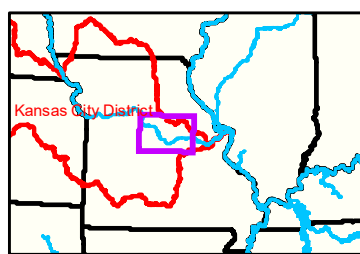
RM 187.3
05242021
574.7

187

188

Boonville Gage = 16.76 at time of collection 24 May 2021"

Gage_L



NOTES:
Horizontal Coordinate System:
World Geodetic System of 1984 (WGS84), projected to the Universal Transverse Mercator (UTM) Zone 15 North.
Distance units in U.S. Survey Feet

Vertical Datum:
Soundings are shown in feet and indicated depths are referenced to water surface at time of collection.

The information depicted on this map represents the results of a survey conducted on the date indicated and can only be considered to represent the general condition existing at that time.

The location of navigation aids are based on and provided by the U.S. Coast Guard.



DISCLAIMER: The U.S. Army Corps of Engineers (USACE) provides this information for informational purposes only. It is not intended for use in any legal proceeding or as a basis for any claim. The USACE makes no warranty, express or implied, regarding the accuracy, completeness, or timeliness of the information provided. The user assumes all liability for any use of this information. The USACE is not responsible for any errors or omissions in this information. The USACE is not liable for any damages, including consequential damages, arising from the use of this information. The USACE is not responsible for any delays in the delivery of this information. The USACE is not responsible for any loss of data or information. The USACE is not responsible for any loss of profit or business. The USACE is not responsible for any loss of income. The USACE is not responsible for any loss of opportunity. The USACE is not responsible for any loss of reputation. The USACE is not responsible for any loss of honor. The USACE is not responsible for any loss of respect. The USACE is not responsible for any loss of dignity. The USACE is not responsible for any loss of prestige. The USACE is not responsible for any loss of status. The USACE is not responsible for any loss of position. The USACE is not responsible for any loss of rank. The USACE is not responsible for any loss of title. The USACE is not responsible for any loss of office. The USACE is not responsible for any loss of authority. The USACE is not responsible for any loss of power. The USACE is not responsible for any loss of jurisdiction. The USACE is not responsible for any loss of jurisdictional authority. The USACE is not responsible for any loss of jurisdictional power. The USACE is not responsible for any loss of jurisdictional authority. The USACE is not responsible for any loss of jurisdictional power.

KANSAS CITY DISTRICT MISSOURI RIVER AREA OFFICE	
Submitted By:	MRAO
Reviewed By:	MRAO
Approved By:	MRAO

Survey Information
MO_02_LMR
MO_02_LMR_20210526_CS_185_0_187_2_SORT
26 May 2021

Sheet Number
40 of 46